



# WDS

---

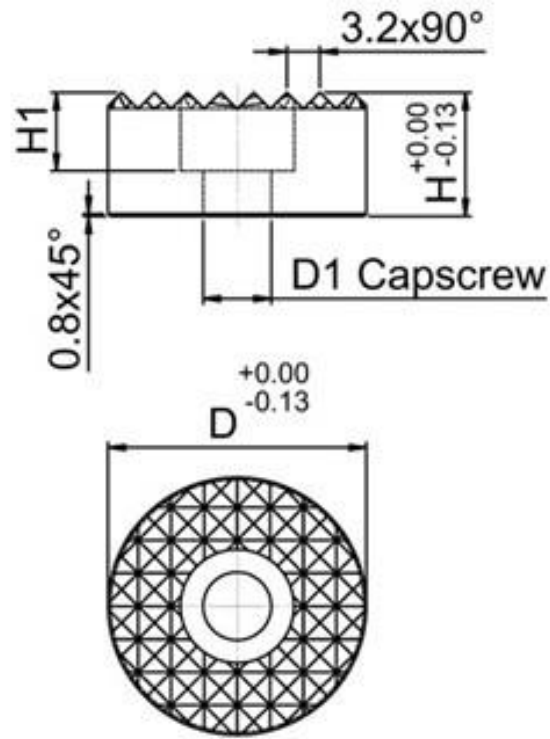


**WDS 698**

## **Metric Round Hardened Steel C/Bored Gripper - Fine Tooth Pattern (WDS 698)**

**MATERIAL**

Tool Steel Hardened  
Chemical Black Finish



### 8 Sizes

WDS NO.	H1	D	D1	H	Tooth Pattern	Weight
698-353	5.6	12	M4	10	-	0.005
698-354	5.6	12	M4	12	-	0.005
698-355	5.6	16	M4	10	-	0.005
698-356	5.6	16	M4	12	-	0.005
698-357	6.6	20	M5	10	-	0.005
698-358	6.6	20	M5	12	-	0.005
698-359	7.6	25	M6	10	-	0.005
698-360	7.6	25	M6	12	-	0.005